



Lower Lodge Park, Rugeley Road | Rugeley | WS15 4BF

£220,000

 **Webbs**
estate agents

Summary

UNEXPECTEDLY BACK ON THE MARKET** LARGE PARK HOME ** THREE BEDROOMS ** ENSUITE ** LOUNGE ** SEPARATE OPEN PLAN KITCHEN DINING ROOM ** UTILITY ROOM ** MAIN BATHROOM ** WRAP AROUND GARDENS ** TWO DRIVEWAYS ** VIEWING ESSENTIAL ** NO UPWARD CHAIN **

WEBBS ESTATE AGENTS are pleased to market this well presented, three bedroom park home, located on the ever popular Lower Lodge Park. Offering well-proportioned living space and enjoying picturesque countryside views to the front aspect, this park home provides an excellent opportunity for semi-retired or retired buyers seeking a peaceful, yet conveniently located residence. Viewing of the property is highly advised to appreciate the deceptive size and space on offer. The internal accommodation briefly comprises; entrance hallway, large lounge, open plan kitchen dining room, utility room, three bedrooms, ensuite and a main bathroom. The property also boasts a wrap around garden and two driveways.

Key Features

- LARGE PARK HOME
- LOUNGE
- UTILITY ROOM
- MAIN BATHROOM
- TWO DRIVEWAYS
- THREE BEDROOMS
- OPEN PLAN KITCHEN DINING ROOM
- ENSUITE
- WRAP AROUND GARDENS
- VIEWING ESSENTIAL

Rooms and Dimensions

Hallway

Living Room

10'8 x 21'7 (3.25m x 6.58m)

Open Plan Kitchen/ Dining Room

8'6 x 27'7 (2.59m x 8.41m)

Utility Room

9'4 x 6'1 (2.84m x 1.85m)

Bedroom 1

9'5 x 11'10 (2.87m x 3.61m)

Ensuite

6'5 x 5'9 (1.96m x 1.75m)

Bedroom 2

7'6 x 8'10 (2.29m x 2.69m)

Bedroom 3

6'6 x 6'8 (1.98m x 2.03m)

Bathroom

6'6 x 5'5 (1.98m x 1.65m)

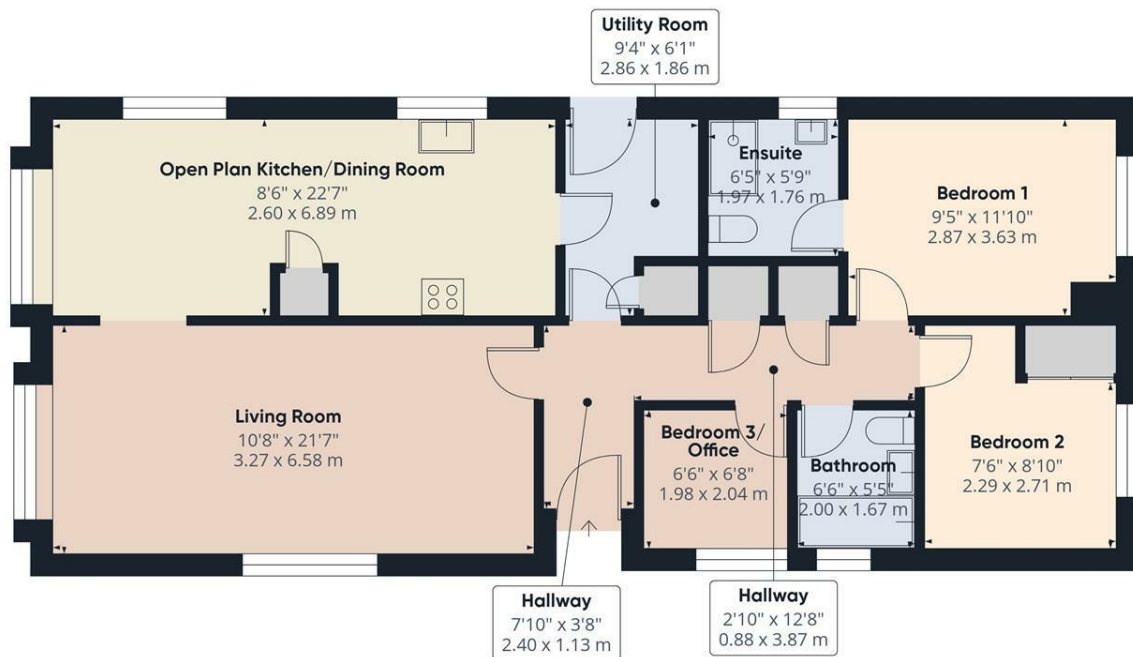
Identification Checks (R)

The Mobile Homes Act 1983 (C)

Agents Notes







Approximate total area⁽¹⁾

884 ft²
81.9 m²

(1) Excluding balconies and terraces

Calculations reference the RICS IPMS 3C standard. Measurements are approximate and not to scale. This floor plan is intended for illustration only.

GIRAFFE360

Webbs Estate Agents - endeavour to maintain accurate depictions of properties in Virtual Tours, Floor Plans and descriptions, however, these are intended only as a guide and purchasers must satisfy themselves by personal inspection.